

**KIRLOSKAR BROTHERS LIMITED**

Split Casing Pumps

# Highly Evolved



## SPP's LLC Series pumps set the standard for

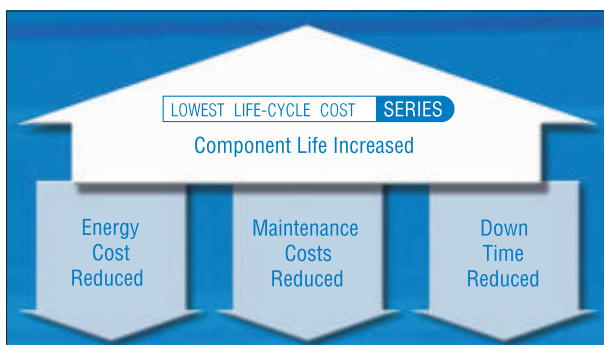
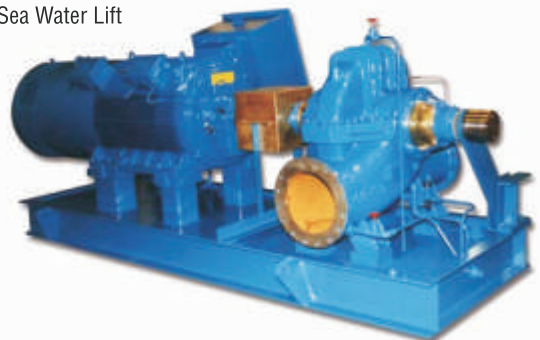
SPP's Lowest Life-cycle Cost Series of Horizontal Split Casing pumps have been specifically developed to meet the requirements of the 21st century pump user. The best of SPP's existing, well-proven designs, have been fine tuned with the aid of three-dimensional computational fluid dynamics, to attain the optimum performance minimising power consumption and internal re-circulation.

Mechanical designs and standard materials of construction have been substantially upgraded, in order to offer the end user unrivalled longevity and the lowest cost of ownership.

SPP's LLC Series pumps set the standard for low life cycle cost pumping equipment.

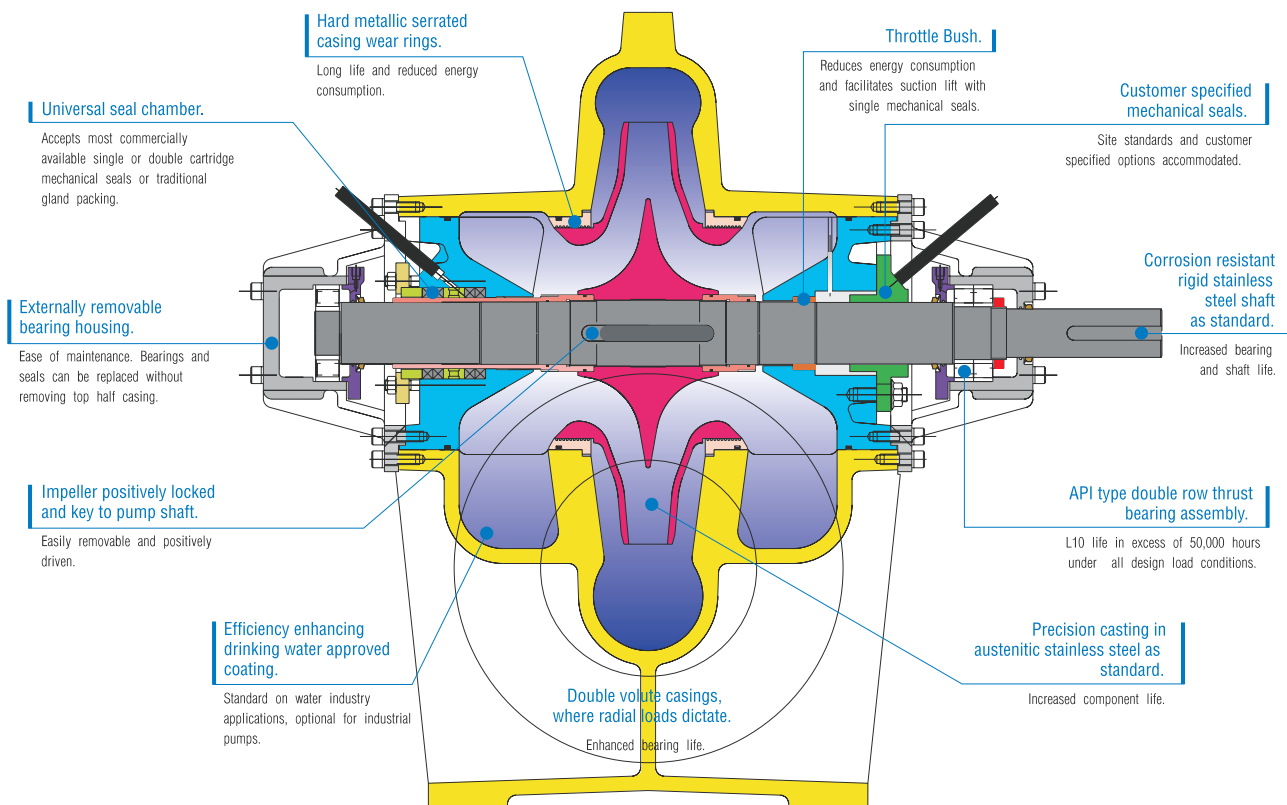
## TYPICAL APPLICATIONS

- Water Treatment & Supply
- Water Extraction
- Booster Pumping
- Cooling Tower Circulation
- Process & Industrial Utility Duties
- Petrochemical Utility Duties
- Hot Water Circulation
- Sea Water Lift



**LOWEST LIFE-CYCLE COST SERIES**

Total Pumping Solutions



PERFORMANCE & CAPACITY 50 Hz up to 1500 rpm	
Flow rates:	up to 6500 m <sup>3</sup> /hr
Heads:	up to 270 m
Liquid temperature:	-10 °C - 120°C Standard Build (Optional up to 160 °C)
Ambient temperature range:	-10 °C to 45°C
Maximum Solids content:	1,000 ppm (fines)
Maximum suction pressures:	Mechanical Seal 14 barg, Soft Packed Gland 5 barg

STANDARD MATERIALS OF CONSTRUCTION	
Casing	Cast Iron
Impeller	Stainless Steel
Wear Rings	Cast Iron
Shaft	Stainless Steel

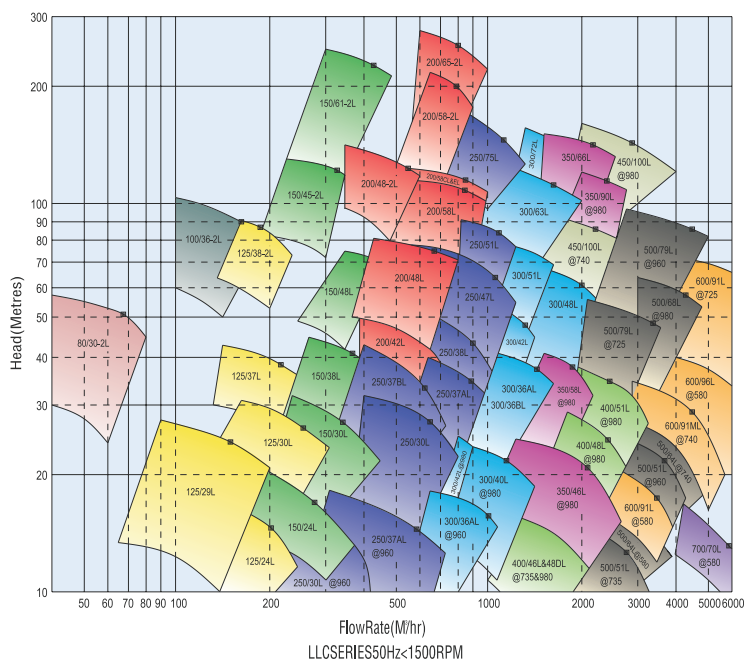
\*Non-standard material options available, consult SPP for alloy irons, bronzes or stainless & duplex steels

## CONFIGURATIONS

- Horizontal – Bareshaft or baseplates mounted with prime mover.
- Vertical Direct Mounted.\*
- Vertical Open Shaft.\*

\*Vertically mounted pumps incorporate a drinking water approved, product lubricated bottom bearing as standard.

## PERFORMANCE & CAPACITY 50 Hz up to 1500 rpm



Pumps | Valves | Motors | Hydro Turbines | Turnkey Projects

## KIRLOSKAR BROTHERS LIMITED

Corporate & Marketing Office : "Yamuna", Survey No. 98 / 3 to 7 Baner, Pune - 411 045 Maharashtra, (India)  
• Phone: +91 - 20 - 2721 4444 • E-mail : industry@kbl.co.in • Web Site : www.kbl.co.in

Works: India: Kirloskarvadi, Shirwal, Kondhapuri, Dewas

Overseas: Ajman, Cairo, Johannesburg, Nairobi, Phnom Penh, Miami, Vientiane, Bangkok, Amsterdam, Dakar  
Regional Sales Offices: India: Ahmedabad, Bangalore, Bhubaneswar, Kolkata, Chennai, Jaipur, Kochi, Lucknow, Mumbai, Nagpur, New Delhi, Pune, Ranchi, Secunderabad

Enriching Lives